



**Life Science Product**  
**2°C~8°C**  
**Biological / Medical / Pharmacy Refrigerator**



Kanna Series Biological / Medical / Pharmacy Refrigerator -2°C~8°C  
Kanna-415L / Kanna-495L / Kanna-625L

Kanna series refrigerator adopts multi-channel cooling system and finned evaporator, equipped with full-featured air-cooled design, and improves energy saving efficiency by more than 40%. It is the first choice for samples and reagents in medical or pharmaceutical industry.



**7 Temperature sensors**



**Real Air Cooling**



**Energy Saving  
Increased by More than 40%**

> Suitable for storage of biological products, vaccines, drugs, reagents, etc. Suitable for use in pharmacies, pharmaceutical factories, hospitals, centers for disease prevention & control, clinics, etc.





### 7 Temperature sensors Accurate Display

7 Temperature sensors, equipped with high-precision microcomputer temperature control system and 1 high-brightness digital temperature display with a display accuracy at 0.1°C, almost 0 fluctuation, storage is safer.



### Multi-channel vortex refrigeration system

The multi-duct vortex refrigeration system and finned evaporator can prevent frosting completely and improve temperature uniformity to a large extent.



### Refrigeration System

Equipped with a compressor supplied by an international famous brand, high-efficiency air-cooled condenser and finned evaporator, ensuring fast refrigeration.



### Energy saving increased by more than 40%

The refrigerator is equipped with "M + Energy Core" power management system and complete air cooling design, improving energy saving efficiency by more than 40%.

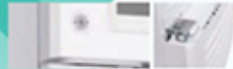




The digital average temperature display facilitates observation and monitoring of temperature inside the cabinet, and the precision of temperature display accuracy at 0.1°C.  
Equipped with a USB recorder, recording every 10 minutes for 2 years.



Equipped with lighting system with LED lights, ensuring high visibility inside the cabinet.



The door is equipped with a lock, external padlocks can be added, preventing it from unauthorised users.



Equipped with high-quality shelves made from PVC-coated steel wire with tag cards and classification marks, which are easy to clean;

A glass door that can be used to observe the sample clearly and equipped with an invisible door handle is beautiful and easy to open.



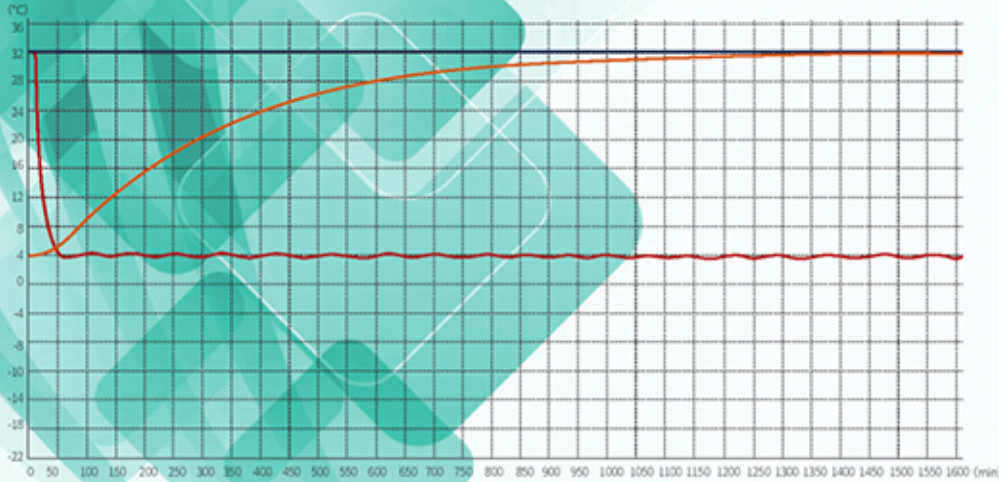
The machine is equipped with a test hole for external temperature testing equipment.

Equipped with a compressor supplied by an international famous brand, high-efficiency air-cooled condenser and finned evaporator, ensuring fast refrigeration.

The machine is equipped with 4 casters, and 2 levelers feet to facilitate the movement and fixing of the freezer.



## Performance Data / Cooling Curve



Kanna-495L

Pull Down 

Ambient Temp 

Warm-up 

> The multi-duct vortex refrigeration system and finned evaporator can prevent frosting completely and improve temperature uniformity to a large extent. The temperature uniformity is controlled 1°C.

## Alarm Function



High/Low temperature



High ambient temperature



Abnormal power supply



Power outage alarm



Sennor error



USB datalogger failure



Condenser failure



System failure



Door ajar



Low batterr

The Refrigerator with 11 different kinds of alarm to ensure the stable operation;

When the refrigerator fails or exceeds / below the set value, the alarm system will be triggered and the indicator light will light up two kinds of alarms.

Buzzer alarm for the door opening more than 1 minute, alarm automatically muted when the door is closed.



After the user starts the machine, This refrigerator delivers optimum performance over a range of setpoints from 2~8°C, The temperature uniformity will be controlled at 1°C.



>Kanna-415L uses a multi-channel vortex refrigeration system and a finned evaporator to completely prevent frosting. The volume is 415L, single door, 4 coated steel wired shelves+1 basket, which is convenient for storing samples.



>Kanna-495L uses a multi-channel vortex refrigeration system and a finned evaporator to completely prevent frosting. The volume is 495L, single door, 6 coated steel wired shelves+1 basket, which is convenient for storing samples.



>Kanna-625L uses a multi-channel vortex refrigeration system and a finned evaporator to completely prevent frosting. The volume is 625L, single door, 6 coated steel wired shelf, which is convenient for storing samples.





## 2~8°C Biological / Medical / Pharmacy Refrigerator

Model	Kanna-415L		Kanna-495L	
Cabinet Type	Upright		Upright	
Capacity(L)	415		495	
Internal Size(W*D*H)mm	580*533*1122		580*533*1352	
External Size(W*D*H)mm	650*673*1762		650*673*1992	
Package Size(W*D*H)mm	727*737*1785		722*732*2010	
NW/GW(Kgs)	87/99		95/108	
Container Load(2C/4C)	21/48		21/48	
<b>Performance</b>				
Temperature Range	2~8°C		2~8°C	
Ambient Temperature	16-32°C		16-32°C	
Cooling Performance	4°C		4°C	
Climate Class	N		N	
Controller	Microprocessor		Microprocessor	
Display	Digital display		Digital display	
<b>Refrigeration</b>				
Compressor	1pc		1pc	
Cooling Method	Air cooling		Air cooling	
Defrost Mode	Automatic		Automatic	
Refrigerant	R600a		R600a	
Insulation Thickness(mm)	R/L:40,U/D:70,B:50		R/L:40,U/D:70,B:50	
<b>Construction</b>				
External Material	Powder coated material		Powder coated material	
Inner Material	High Impact Polystyrene(HIPS)		ABS	
Door Lock with Key	4+1(coated steel wired shelf)		6+1(coated steel wired shelf)	
Shelves	Yes		Yes	
External Lock	Yes		Yes	
Lighting	Yes		Yes	
Access Test Port	1pc. Ø 25 mm		1pc. Ø 25 mm	
Casters	4+ (2 levelers feet)		4+ (2 levelers feet)	
Data Logging/Interval/Recording Time	USB/Record every 10 minute / 2years		USB/Record every 10 minute / 2years	
Door with Heater	Yes		Yes	
Backup battery	Yes		Yes	
RS485	Yes		Yes	
Remote alarm contact	Yes		Yes	
<b>Alarm</b>				
Temperature	High/Low temperature,High ambient temperature,Condenser high temperature			
Electrical	Power failure,Low battery,			
System	Sensor error,Door ajar, Built-in datalogger USB Failure,Remote alarm			
<b>Electrical</b>				
Power Supply(V/HZ)	220-240V/60Hz	220-240V/60Hz	220-240V/60Hz	220-240V/60Hz
Rated Power(W)	220	258	280	259
Input Power(W)	285	276	290	
Current Consumption(KWh/24h)	2.05	3.7	2.5	3.13
Rated Current(A)	1.35	1.2	1.8	1.28
<b>Standard Accessory</b>				
System	Printer, RS232		Printer, RS232	
<b>Other</b>				
Certification	CE,UL,ISO		CE,UL,ISO	



### 2~8°C Biological / Medical / Pharmacy Refrigerator

Model	Kanna-625L	
Cabinet Type	Upright	
Capacity(L)	625	
Internal Size(W*D*H)mm	610*685*1264	
External Size(W*D*H)mm	720*810*1961	
Package Size(W*D*H)mm	78*868*2075	
NW/GW(Kgs)	148/174	
Container Load(20Σ /40Σ)	14/28	
<b>Performance</b>		
Temperature Range	2~8°C	
Ambient Temperature	16-32°C	
Cooling Performance	4°C	
Climate Class	N	
Controller	Microprocessor	
Display	Digital display	
<b>Refrigeration</b>		
Compressor	1pc	
Cooling Method	Air cooling	
Defrost Mode	Automatic	
Refrigerant	R290	
Insulation Thickness(mm)	R/L:55,U:65,D:80,B:55	
<b>Construction</b>		
External Material	Powder coated material	
Inner Material	Aluminum plate with spraying / Stainless steel(optional)	
Door Lock with Key	6(coated steel wired shelf)	
Shelves	Yes	
External Lock	Yes	
Lighting	Yes	
Access Test Port	1pc. Ø 25 mm	
Casters	4 (2 caster with brake)	
Data Logging/Interval/Recording Time	USB/Record every 10 minute / 2years	
Door with Heater	Yes	
Backup battery	Yes	
RS485	Yes	
Remote alarm contact	Yes	
<b>Alarm</b>		
Temperature	High/Low temperature,High ambient temperature,Condenser high temperature	
Electrical	Power failure,Low battery,	
System	Sensor error,Door ajar, Built-in datalogger USB Failure,Remote alarm	
<b>Electrical</b>		
Power Supply(V/HZ)	220-240V/60Hz	220-240V/60Hz
Rated Power(W)	415	443
Input Power(W)	548	572
Current Consumption(KWh/24h)	3.81	3.91
Rated Current(A)	2.49	2.6
<b>Standard Accessory</b>		
System	Printer, RS232	
Other		
Certification	CE,UL,ISO	





**Life Science Product**  
**2°C~8°C**  
**Biological / Medical / Pharmacy Refrigerator**



Kanna Series Biological / Medical / Pharmacy Refrigerator, 2~8°C.

Kanna-825L / Kanna-1115L / Kanna-1605L



**7 Temperature Probes**



**Real Air Cooling**



**Energy Saving  
Increased by More than 40%**

> Suitable for storage of biological products, vaccines, drugs, reagents, etc. Suitable for use in pharmacies, pharmaceutical factories, hospitals, centers for disease prevention & control, clinics, etc.



### 7 Temperature sensors Accurate Display

7 Temperature sensors, equipped with high-precision microcomputer temperature control system and 1 high-brightness digital temperature display with a display accuracy at 0.1°C, almost 0 fluctuation, storage is safer.



### Multi-channel vortex refrigeration system

The multi-duct vortex refrigeration system and finned evaporator can prevent frosting completely and improve temperature uniformity to a large extent.



### Refrigeration System

Equipped with a compressor supplied by an international famous brand, high-efficiency air-cooled condenser and finned evaporator, ensuring fast refrigeration.



### Energy saving increased by more than 40%

The refrigerator is equipped with "M + Energy Core" power management system and complete air cooling design, improving energy saving efficiency by more than 40%.







# Schnee

**ALPINUM PRAZISION COLD CHAIN**



The digital average temperature display facilitates observation and monitoring of temperature inside the cabinet, and the precision of temperature display accuracy at 0.1°C.

Equipped with a USB recorder, recording every 10 minutes for 2 years.

Equipped with lighting system with LED lights, ensuring high visibility inside the cabinet.

The double door is equipped with a lock, preventing it from unauthorized users.

Equipped with high-quality shelves made from PVC-coated steel wire with tag cards and classification marks, which are easy to clean;



The machine is equipped with a test hole for external temperature testing equipment.

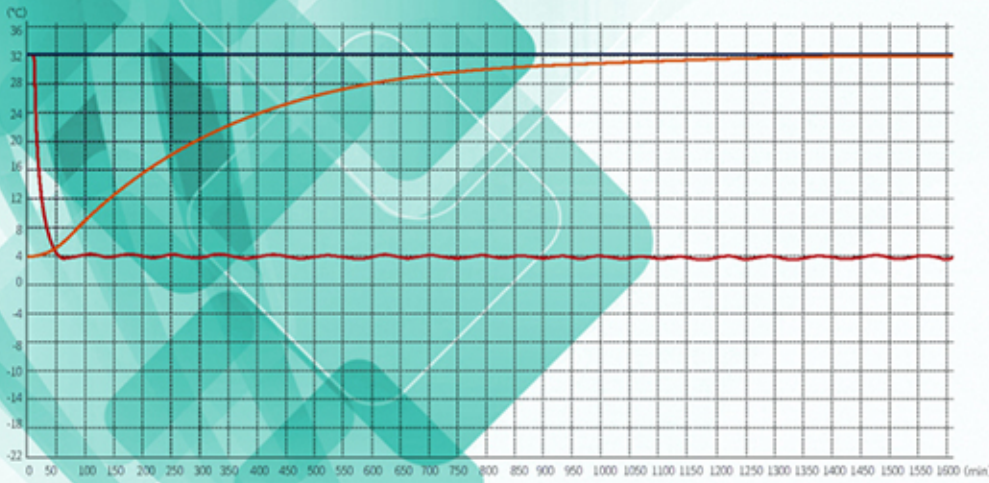
A glass door that can be used to observe the sample clearly and equipped with aluminum alloy door handles, not only beautiful, but also help to open the door

Equipped with a compressor supplied by an international famous brand, high-efficiency air-cooled condenser and finned evaporator, ensuring fast refrigeration.

The machine is equipped with 4 casters, and the front casters are equipped with brake locks, to facilitate the movement and fixing of the freezer.



## Performance Data / Cooling Curve



Kanna-495L

Pull Down

Ambient Temp

Warm-up

> The multi-duct vortex refrigeration system and finned evaporator can prevent frosting completely and improve temperature uniformity to a large extent, The temperature uniformity is controlled 1°C.

## Alarm Function



High/Low temperature



High ambient temperature



Abnormal power supply



Power outage alarm



Sennor error



USB datalogger failure



Condenser failure



System failure



Door ajar



Low batterr

The refrigerator with 11 different kinds of alarm to ensure the stable operation;

When the refrigerator fails or exceeds / undershoots the set value, the alarm system will sound and the indicator light will light up two kinds of alarms.

Buzzer alarm for the door opening more than 1 minute, alarm automatically muted when the door is closed.



After the user starts the machine, This refrigerator delivers optimum performance over a range of setpoints from 2~8°C, The temperature uniformity will be controlled at 1°C.



> Kanna-825L uses a multi-channel vortex refrigeration system and a finned evaporator to completely prevent frosting. The volume is 825L, double door, 6 \*2 coated steel wired shelf, which is convenient for storing samples.



> Kanna-1115L uses a multi-channel vortex refrigeration system and a finned evaporator to completely prevent frosting. The volume is 1115L, double door, 6 \*2 coated steel wired shelf, which is convenient for storing samples.



> Kanna-1605L uses a multi-channel vortex refrigeration system and a finned evaporator to completely prevent frosting. The volume is 1605L, double door, 6 \*3 coated steel wired shelf, which is convenient for storing samples.





**2~8°C Biological / Medical / Pharmacy Refrigerator**

Model	Kanna-825L		Kanna-1115L	
Cabinet Type	Upright		Upright	
Capacity(L)	825		1115	
Internal Size(W*D*H)mm	980*595*1260		1070*670*1515	
External Size(W*D*H)mm	1093*758*1972		1180*900*1990	
Package Size(W*D*H)mm	1187*795*2136		1313*988*2168	
NW/GW(Kgs)	171/200		223/262	
Container Load(20°C/40°C)	11/24		10/21	
<b>Performance</b>				
Temperature Range	2~8°C		2~8°C	
Ambient Temperature	16-32°C		16-32°C	
Cooling Performance	4°C		4°C	
Climate Class	N		N	
Controller	Microprocessor		Microprocessor	
Display	Digital display		Digital display	
<b>Refrigeration</b>				
Compressor	1pc		1pc	
Cooling Method	Air cooling		Air cooling	
Defrost Mode	Automatic		Automatic	
Refrigerant	R290		R290	
Insulation Thickness(mm)	R/L:55,U:65, D:80,B:55		55	
<b>Construction</b>				
External Material	Powder coated material		Spray cold rolled steel plate	
Inner Material	Aluminum plate with spraying / Stainless steel(optional)		304 Stainless steel	
Door Lock with Key	12(coated steel wired shelf)		12(coated steel wired shelf)	
Shelves	Yes		Yes	
External Lock	Yes		Yes	
Lighting	Yes		Yes	
Access Test Port	1pc. Ø 25 mm		1pc. Ø 25 mm	
Castors	4+ (2 levelers feet)		4 (coated steel wired shelf)	
Data Logging/Interval/Recording Time	USB/Record every 10 minute / 2years		USB/Record every 10 minute / 2years	
Door with Heater	Yes		Yes	
Backup battery	Yes		Yes	
RS485	Yes		Yes	
Remote alarm contact	Yes		Yes	
<b>Alarm</b>				
Temperature	High/Low temperature,High ambient temperature,Condenser high temperature			
Electrical	Power failure,Low battery,			
System	Sensor error,Door ajar, Built-in datalogger USB Failure,Remote alarm			
<b>Electrical</b>				
Power Supply(V/HZ)	220-240V/ 60Hz	220-240V/ 60Hz	220-240V/ 60Hz	220-240V/ 60Hz
Rated Power(W)	540	726	700	785
Input Power(W)	790	810	796	853
Current Consumption(KWh/24h)	8.42	9.35	9.33	10.6
Rated Current(A)	3.38	3.52	3.62	3.59
<b>Standard Accessory</b>				
System	Printer, RS232		Printer, RS232	
<b>Other</b>				
Certification	CE,UL,ISO		CE,UL,ISO	



## 2~8°C Biological / Medical / Pharmacy Refrigerator

Model	Kanna-1605L
Cabinet Type	Upright
Capacity(L)	1605
Internal Size(W*D*H)mm	1685*600*1385
External Size(W*D*H)mm	1975*822*1975
Package Size(W*D*H)mm	1918*928*2193
NW/GW(Kgs)	223/262
Container Load(2Q /4Q)	6/12
<b>Performance</b>	
Temperature Range	2~8°C
Ambient Temperature	16-32°C
Cooling Performance	4°C
Climate Class	N
Controller	Microprocessor
Display	Digital display
<b>Refrigeration</b>	
Compressor	1pc
Cooling Method	Air cooling
Defrost Mode	Automatic
Refrigerant	R134a
Insulation Thickness(mm)	55
<b>Construction</b>	
External Material	Powder coated material and Spray cold rolled steel plate
Inner Material	Stainless steel
Door Lock with Key	18(coated steel wired shelf)
Shelves	Yes
External Lock	Yes
Lighting	Yes
Access Test Port	1pc. Ø 25 mm
Casters	4 (coated steel wired shelf)
Data Logging/Interval/Recording Time	USB/Record every 10 minute / 2years
Door with Heater	Yes
Backup battery	Yes
RS485	Yes
Remote alarm contact	Yes
<b>Alarm</b>	
Temperature	High/Low temperature,High ambient temperature,Condenser high temperature
Electrical	Power failure,Low battery,
System	Sensor error,Door ajar, Built-in datalogger USB Failure,Remote alarm
<b>Electrical</b>	
Power Supply(V/HZ)	220-240V/ 60Hz
Rated Power(W)	1283
Input Power(W)	1373
Current Consumption(KWh/24h)	13.22
Rated Current(A)	6.55
<b>Standard Accessory</b>	
System	Printer, RS232
<b>Other</b>	
Certification	CE,UL,ISO